

Cath Strap - Attaching the Patient Pieces

Step 1 – Attach the patient Strap with fuzzy Velcro (called loop or female Velcro) to the right side of Base Unit

- A. Open the loop on the right side of the Base Unit.



Step 2 – Feed the Strap with “loop” Velcro through the loop

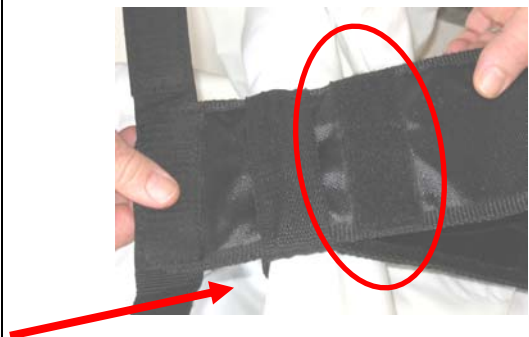
- A. With the loop (fuzzy) side of strap Velcro facing up, feed the length of the strap through.



Step 3 – Pull length of Strap through the right side Base loop...



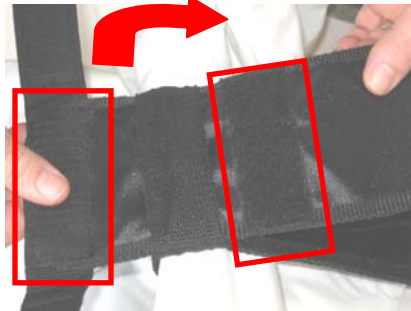
Step 4 - Until Velcro attachment strip has passed through the Base Unit loop



Cath Strap - Attaching the Patient Pieces

Step 5 – Match the Patient Strap Velcro and secure the long strap to itself

- A. Match hook & loop Velcro on either side of Base Unit loop and press firmly together.



Step 6 – Wrap the dog-eared Velcro portions around 4” patient strap and lock Velcro together.



Step 7 – Repeat Steps 1-7 to attach other Patient Strap

Note: Once assembled, the Strap System slides easily to adjust for patient height or table cleaning.

